

PUNE INSTITUTE OF BUSINESS MANAGEMENT

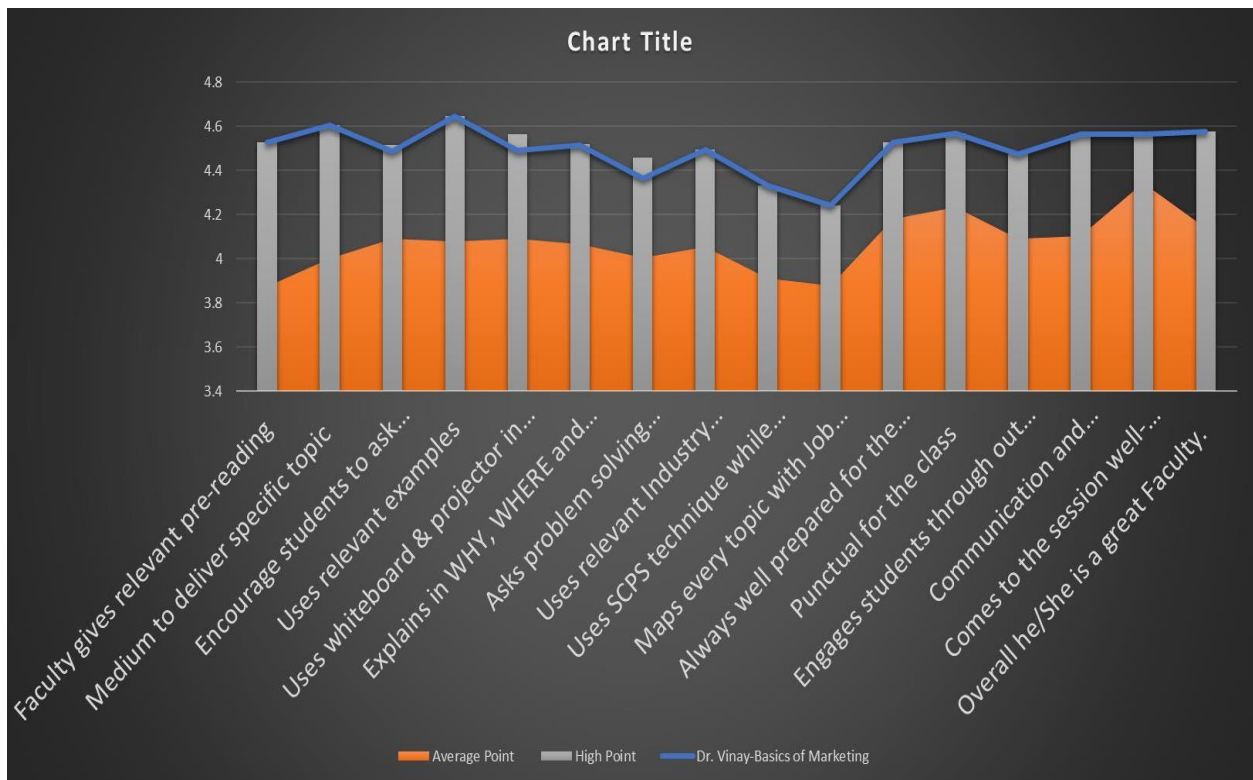
APPROVED BY AICTE, MINISTRY OF HRD, GOVERNMENT OF INDIA
AFFILIATED TO THE UNIVERSITY OF PUNE



Faculty Name: Dr. Vinay
Subject: Basics of Marketing
Semester: First (I)

Course: MBA
Batch: 2022-24

Sr No	Name	Dr. Vinay-Basics of Marketing	Average Point	High Point
1.	Faculty gives relevant pre-reading	4.525423729	3.872632104	4.525423729
2.	Medium to deliver specific topic	4.605932203	4.001994018	4.605932203
3.	Encourage students to ask questions	4.487288136	4.088235294	4.512711864
4.	Uses relevant examples	4.644067797	4.077517448	4.644067797
5.	Uses whiteboard & projector in the best way	4.491525424	4.088235294	4.563559322
6.	Explains in WHY, WHERE and HOW for every topic	4.512711864	4.067298106	4.516949153
7.	Asks problem solving questions/conduct activities	4.36440678	4.003489531	4.457627119
8.	Uses relevant Industry examples to explain topic	4.495762712	4.051595214	4.495762712
9.	Uses SCPS technique while deliver the concept	4.330508475	3.909022931	4.330508475
10.	Maps every topic with Job Description	4.241525424	3.877367896	4.241525424
11.	Always well prepared for the session	4.525423729	4.178215354	4.525423729
12.	Punctual for the class	4.56779661	4.231555334	4.56779661
13.	Engages students through out the class	4.474576271	4.091724826	4.474576271
14.	Communication and explanation is easy to understand.	4.563559322	4.100947159	4.563559322
15.	Comes to the session well-groomed	4.563559322	4.341974078	4.563559322
16.	Overall he/She is a great Faculty.	4.576271186	4.137587238	4.576271186



Interpretation:

STRENGTHS

1. The faculty uses real-life examples to teach subject in an effective way
2. The faculty is always punctual to sessions.
3. The faculty make use of diverse teaching mediums, such as videos, audio, PowerPoint presentations, and case studies.

AREAS OF IMPROVEMENT:

1. The faculty need to align each topic with job descriptions and as this will provide a clear career perspective.
2. The faculty need to use SCPS approach in the classes to enable application-based learning.(For any queries, faculty may discuss with respective HODs)
3. The faculty need to incorporate problem-solving questions and activities that helps students develop critical thinking skills

PUNE INSTITUTE OF BUSINESS MANAGEMENT

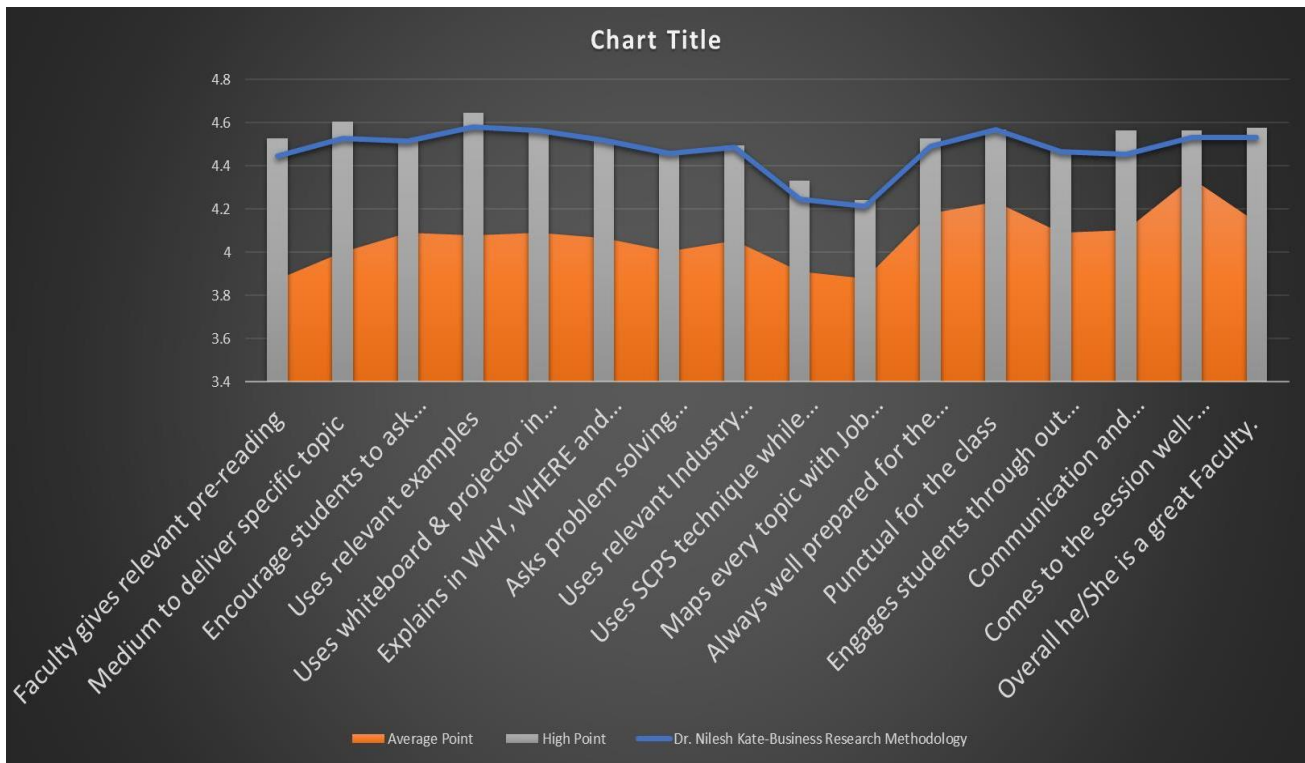
APPROVED BY AICTE, MINISTRY OF HRD, GOVERNMENT OF INDIA
AFFILIATED TO THE UNIVERSITY OF PUNE



Faculty Name: Dr. Nilesh Kate
Subject: Business Research Methodology
Semester: First (I)

Course: MBA
Batch:2022-24

Sr No	Name	Dr. Nilesh Kate- Business Research Methodology	Average Point	High Point
1.	Faculty gives relevant pre-reading	4.444915254	3.872632104	4.525423729
2.	Medium to deliver specific topic	4.525423729	4.001994018	4.605932203
3.	Encourage students to ask questions	4.512711864	4.088235294	4.512711864
4.	Uses relevant examples	4.580508475	4.077517448	4.644067797
5.	Uses whiteboard & projector in the best way	4.563559322	4.088235294	4.563559322
6.	Explains in WHY, WHERE and HOW for every topic	4.516949153	4.067298106	4.516949153
7.	Asks problem solving questions/conduct activities	4.457627119	4.003489531	4.457627119
8.	Uses relevant Industry examples to explain topic	4.487288136	4.051595214	4.495762712
9.	Uses SCPS technique while deliver the concept	4.245762712	3.909022931	4.330508475
10.	Maps every topic with Job Description	4.211864407	3.877367896	4.241525424
11.	Always well prepared for the session	4.491525424	4.178215354	4.525423729
12.	Punctual for the class	4.56779661	4.231555334	4.56779661
13.	Engages students throughout the class	4.466101695	4.091724826	4.474576271
14.	Communication and explanation is easy to understand.	4.453389831	4.100947159	4.563559322
15.	Comes to the session well-groomed	4.529661017	4.341974078	4.563559322
16.	Overall, he/She is a great Faculty.	4.529661017	4.137587238	4.576271186



Interpretation:

STRENGTHS:

1. The faculty uses real-life examples to teach subject in an effective way
2. The faculty appears always professional and well groomed.
3. The faculty is always punctual to sessions.

AREAS OF IMPROVEMENT:

1. The faculty need to align each topic with job descriptions and as this will provide a clear career perspective.
2. The faculty need to use SCPS approach in the classes to enable application-based learning. (For any queries, faculty may discuss with respective HODs)
3. The faculty need to consistently provide pre-reading materials before each session

PUNE INSTITUTE OF BUSINESS MANAGEMENT

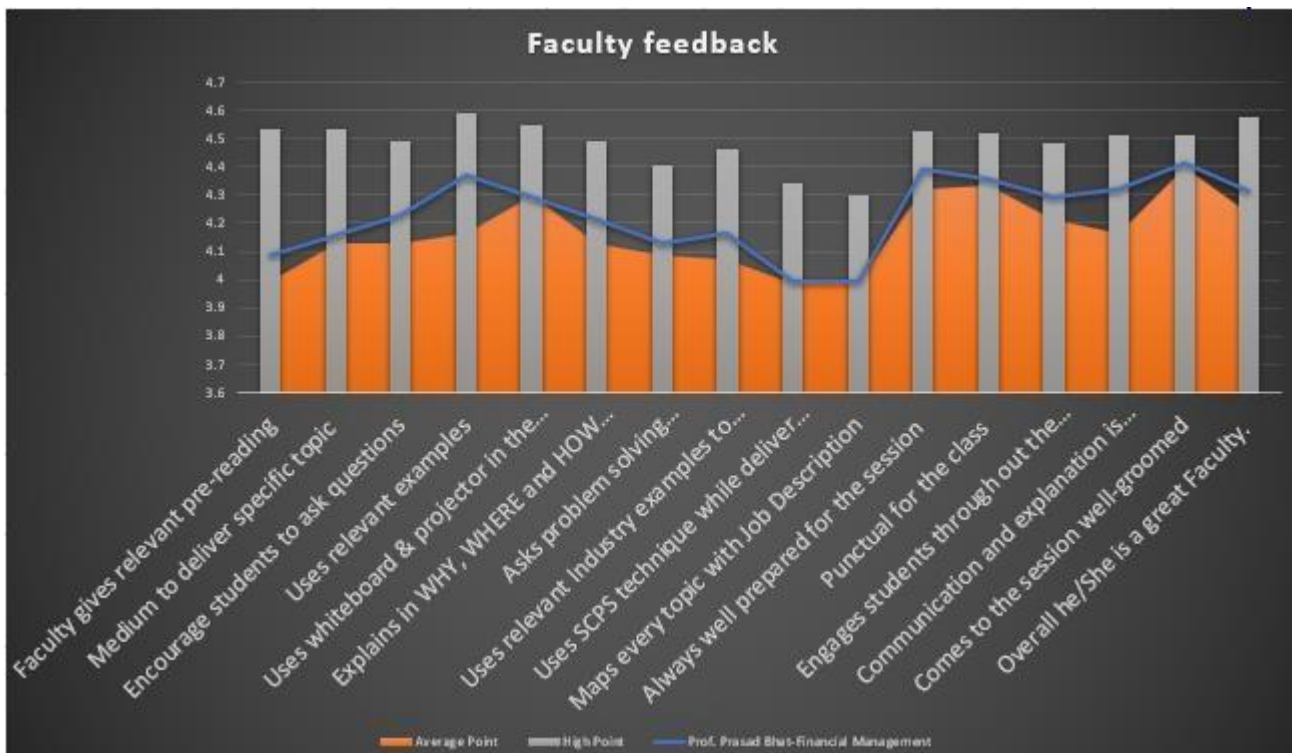
APPROVED BY AICTE, MINISTRY OF HRD, GOVERNMENT OF INDIA
AFFILIATED TO THE UNIVERSITY OF PUNE



Faculty Name: Prof. Prasad Bhat
Subject: Financial Management
Semester: First (I)

Course: MBA
Batch: 2022-24

Sr No	Name	Prof. Prasad Bhat- Financial Management	Average Point	High Point
1.	Kindly Rate the faculty - Faculty gives relevant pre-reading for every session	4.083333333	3.996428571	4.536111111
2.	Kindly Rate the faculty - Faculty uses relevant medium (Video, Audio, PPT, Case Study, etc..) to deliver specific Topic	4.158333333	4.125595238	4.533333333
3.	Kindly Rate the faculty - Faculty encourage every student to ask relevant question in the session	4.225	4.129761905	4.491666667
4.	Kindly Rate the faculty - Faculty uses relevant example based on the topic	4.372222222	4.161507937	4.586111111
5.	Kindly Rate the faculty - Faculty used white board & projector at the best possible way	4.294444444	4.301388889	4.55
6.	Kindly Rate the faculty - Faculty explains in every topic WHY the topic taught? WHERE it can be applied? HOW it is aligned with Purpose?	4.213888889	4.128769841	4.491666667
7.	Kindly Rate the faculty - Faculty ask problem solving question / conduct activity in every session to build logical thinking	4.127777778	4.089484127	4.408333333
8.	Kindly Rate the faculty - Faculty used relevant Industry examples to explain topic	4.163888889	4.074007937	4.461111111
9.	Kindly Rate the faculty - Faculty uses SCPS technique while delivering the concept	3.994444444	3.983531746	4.344444444
10.	Kindly Rate the faculty - Faculty mapped every topic with Job Description	3.994444444	3.993253968	4.3
11.	Kindly Rate the faculty - Faculty was well prepared for this session	4.391666667	4.317857143	4.525
12.	Kindly Rate the faculty - He/She is punctual for the class	4.358333333	4.33234127	4.519444444
13.	Kindly Rate the faculty - He engages students through out the class	4.291666667	4.2125	4.486111111
14.	Kindly Rate the faculty - His communication and explanation is easy to understand.	4.319444444	4.166468254	4.511111111
15.	Kindly Rate the faculty - He/She comes to the session well-groomed "]	4.411111111	4.4	4.508333333
16.	Kindly Rate the faculty - Overall he/She is a great Faculty.	4.311111111	4.231349206	4.572222222



Interpretation:

STRENGTHS:

1. The faculty uses real-life examples to teach the subject in an effective way.
2. The faculty appears always professional and well-groomed.
3. The faculty consistently demonstrated thorough preparation for each session.

AREAS OF IMPROVEMENT:

1. The faculty needs to consistently provide pre-reading materials before each session.
2. The faculty needs to use the SCPS approach in the classes to enable application-based learning. (For any queries, faculty may discuss with respective HODs).
3. The faculty needs to align each topic with job descriptions as this will provide a clear career perspective.

PUNE INSTITUTE OF BUSINESS MANAGEMENT

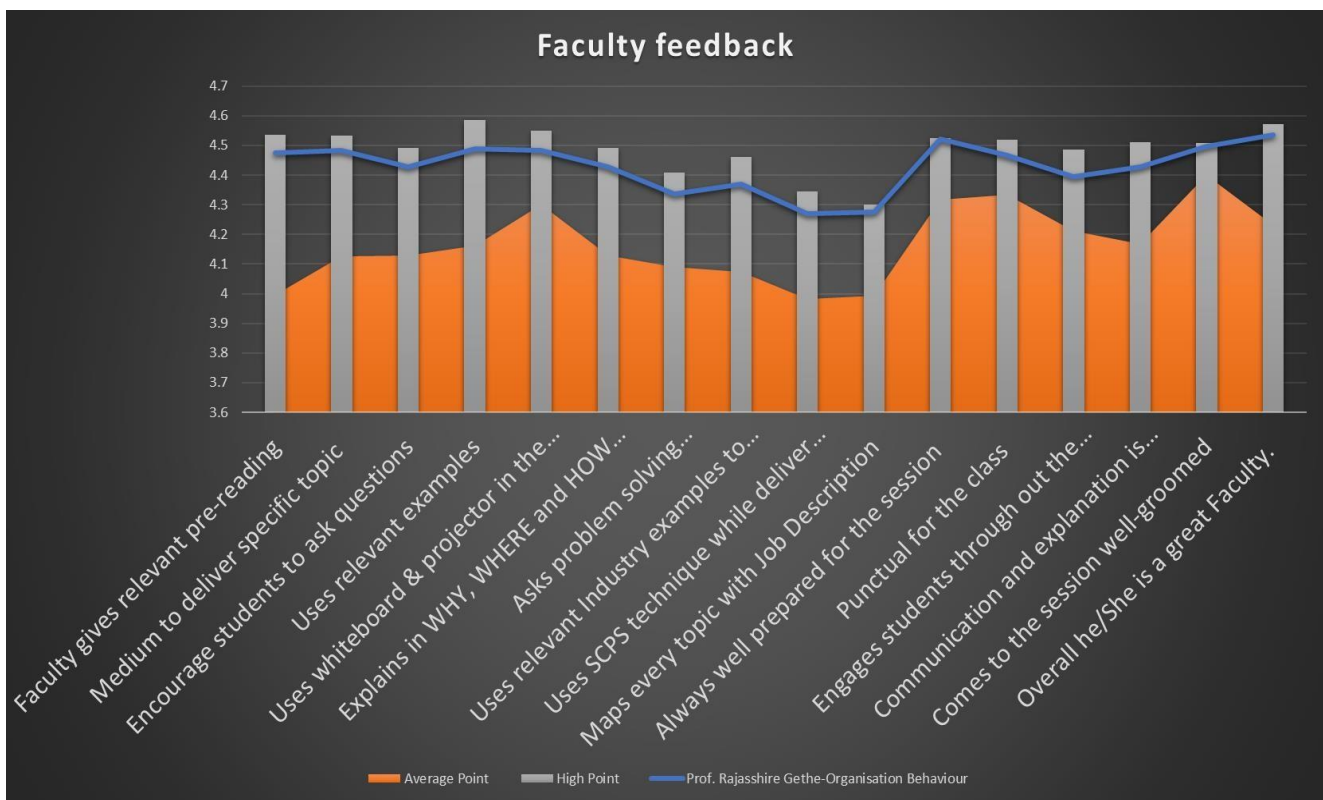
APPROVED BY AICTE, MINISTRY OF HRD, GOVERNMENT OF INDIA AFFILIATED TO THE UNIVERSITY OF PUNE



Faculty Name: Prof. Rajasshire Gethe
Subject: Organisation Behaviour
Semester: First (I)

Course: MBA
Batch:2022-24

Sr No	Name	Prof. Rajasshire Gethe- Organisation Behaviour	Average Point	High Point
1.	Faculty gives relevant pre-reading	4.475	3.996428571	4.536111111
2.	Medium to deliver specific topic	4.483333333	4.125595238	4.533333333
3.	Encourage students to ask questions	4.427777778	4.129761905	4.491666667
4.	Uses relevant examples	4.488888889	4.161507937	4.586111111
5.	Uses whiteboard & projector in the best way	4.483333333	4.301388889	4.55
6.	Explains in WHY, WHERE and HOW for every topic	4.427777778	4.128769841	4.491666667
7.	Asks problem solving questions/conduct activities	4.336111111	4.089484127	4.408333333
8.	Uses relevant Industry examples to explain topic	4.369444444	4.074007937	4.461111111
9.	Uses SCPS technique while deliver the concept	4.269444444	3.983531746	4.344444444
10	Maps every topic with Job Description	4.275	3.993253968	4.3
11	Always well prepared for the session	4.522222222	4.317857143	4.525
12	Punctual for the class	4.466666667	4.33234127	4.519444444
13	Engages students through out the class	4.394444444	4.2125	4.486111111
14	Communication and explanation is easy to understand.	4.427777778	4.166468254	4.511111111
15	Comes to the session well-groomed	4.497222222	4.4	4.508333333
16	Overall he/She is a great Faculty.	4.536111111	4.231349206	4.572222222



Interpretation:

STRENGTHS:

1. The faculty uses real-life examples to teach the subject effectively.
2. The faculty consistently demonstrated thorough preparation for each session
3. The faculty appears always professional and well-groomed.

AREAS OF IMPROVEMENT:

1. The faculty needs to align each topic with job descriptions as this will provide a clear career perspective.
2. The faculty need to use the SCPS approach in the classes to enable application-based learning. (For any queries, faculty may discuss with respective HODs)
3. The faculty needs to incorporate problem-solving questions and activities that helps students develop critical thinking skills

PUNE INSTITUTE OF BUSINESS MANAGEMENT

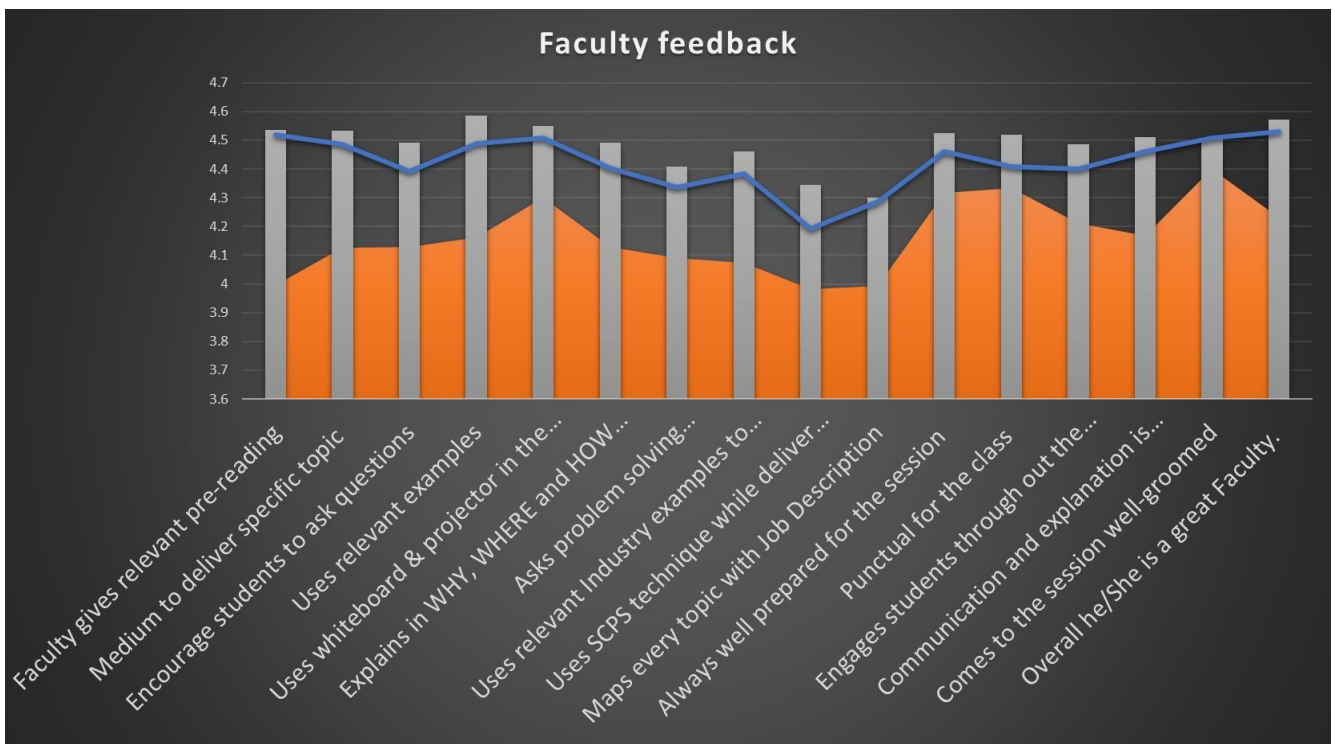
APPROVED BY AICTE, MINISTRY OF HRD, GOVERNMENT OF INDIA
AFFILIATED TO THE UNIVERSITY OF PUNE



Faculty Name: Prof. Sehrawat Poornima
Subject: Human Resource Management
Semester: First (I)

Course: MBA
Batch: 2022-24

Sr No	Name	Dr. Sehrawat Poornima -Human Resource Management	Average Point	High Point
1.	Kindly Rate the faculty - Faculty gives relevant pre-reading for every sessions	4.519444444	3.996428571	4.536111111
2.	Kindly Rate the faculty - Faculty uses relevant medium (Video, Audio, PPT, Case Study, etc..) to deliver specific Topic	4.486111111	4.125595238	4.533333333
3.	Kindly Rate the faculty - Faculty encourage every student to ask relevant question in the session	4.391666667	4.129761905	4.491666667
4.	Kindly Rate the faculty - Faculty uses relevant example based on the topic	4.488888889	4.161507937	4.586111111
5.	Kindly Rate the faculty - Faculty used white board & projector at the best possible way	4.508333333	4.301388889	4.55
6.	Kindly Rate the faculty - Faculty explains in every topic WHY the topic taught? WHERE it can be applied? HOW it is aligned with Purpose?	4.402777778	4.128769841	4.491666667
7.	Kindly Rate the faculty - Faculty ask problem solving question / conduct activity in every session to build logical thinking	4.336111111	4.089484127	4.408333333
8.	Kindly Rate the faculty - Faculty used relevant Industry examples to explain topic	4.383333333	4.074007937	4.461111111
9.	Kindly Rate the faculty - Faculty uses SCPS technique while deliver the concept	4.191666667	3.983531746	4.344444444
10	Kindly Rate the faculty - Faculty mapped every topic with Job Description	4.286111111	3.993253968	4.3
11	Kindly Rate the faculty - Faculty was well prepared for the session	4.461111111	4.317857143	4.525
12	Kindly Rate the faculty - He/She is punctual for the class	4.408333333	4.33234127	4.519444444
13	Kindly Rate the faculty - He engages students through out the class	4.4	4.2125	4.486111111
14	Kindly Rate the faculty - His communication and explanation is easy to understand.	4.461111111	4.166468254	4.511111111
15	Kindly Rate the faculty - He/She comes to the session well-groomed "]	4.508333333	4.4	4.508333333
16	Kindly Rate the faculty - Overall he/She is a great Faculty.	4.530555556	4.231349206	4.572222222



Interpretation:

STRENGTHS:

1. The faculty consistently provided pre-reading materials before each session
2. The faculty skillfully utilized the whiteboard and projector to illustrate concepts, enhancing the clarity and visual appeal of the lessons.
3. The faculty appears always professional and well-groomed.

AREAS OF IMPROVEMENT:

1. The faculty needs to use the SCPS approach in the classes to enable application-based learning. (For any queries, faculty may discuss with respective HODs)
2. The faculty needs to align each topic with job descriptions as this will provide a clear career perspective.
3. The faculty needs to align each topic with job descriptions as this will provide a clear career perspective.

PUNE INSTITUTE OF BUSINESS MANAGEMENT

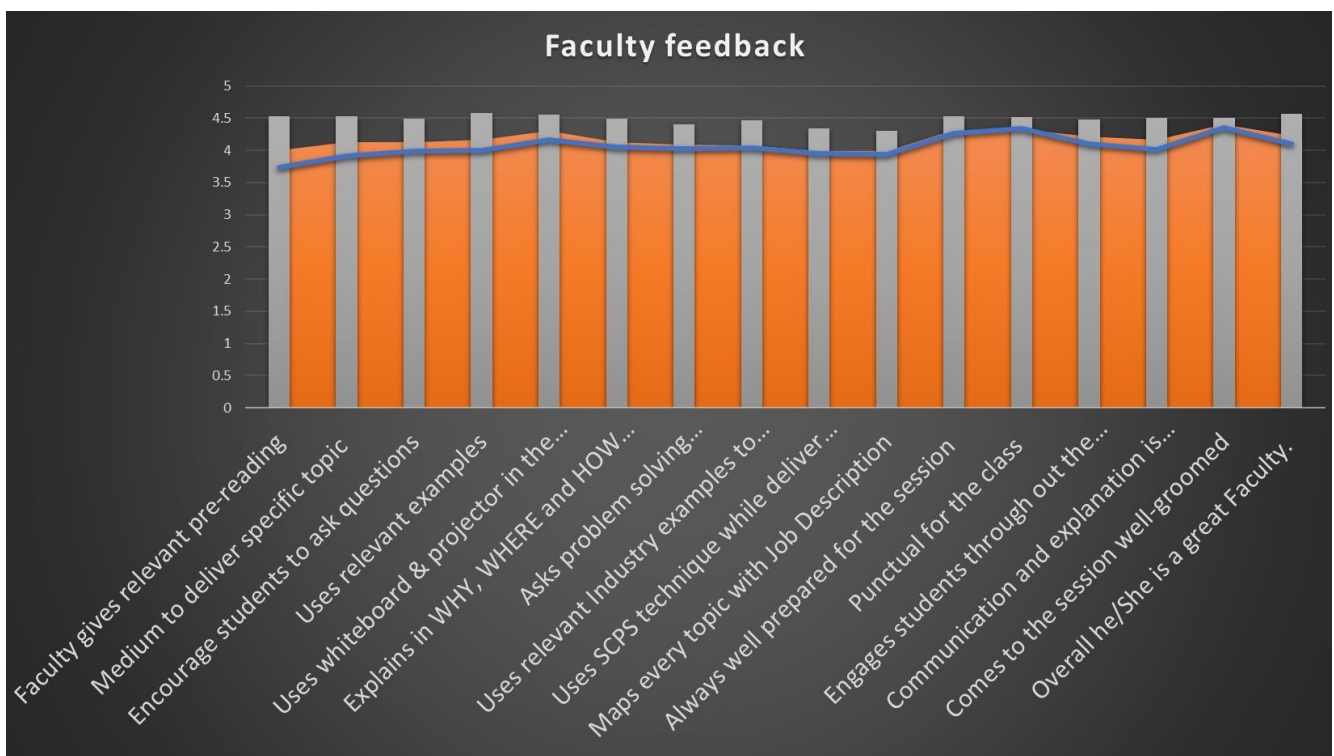
APPROVED BY AICTE, MINISTRY OF HRD, GOVERNMENT OF INDIA
AFFILIATED TO THE UNIVERSITY OF PUNE



Faculty Name: Prof. Neelima Khaladkar
Subject: Basics of Operations Management
Semester: First (I)

Course: MBA
Batch : 2022-24

Sr No	Name	Prof. Neelima Khaladkar - Basics of Operations Management	Average Point	High Point
1.	Faculty gives relevant pre-reading	3.736111111	3.996428571	4.536111111
2.	Medium to deliver specific topic	3.913888889	4.125595238	4.533333333
3.	Encourage students to ask questions	3.986111111	4.129761905	4.491666667
4.	Uses relevant examples	3.997222222	4.161507937	4.586111111
5.	Uses whiteboard G projector in the best way	4.161111111	4.301388889	4.55
6.	Explains in WHY, WHERE and HOW for every topic	4.055555556	4.128769841	4.491666667
7.	Asks problem solving questions/conduct activities	4.027777778	4.089484127	4.408333333
8.	Uses relevant Industry examples to explain topic	4.044444444	4.074007937	4.461111111
9.	Uses SCPS technique while deliver the concept	3.947222222	3.983531746	4.344444444
10	Maps every topic with Job Description	3.941666667	3.993253968	4.3
11	Always well prepared for the session	4.272222222	4.317857143	4.525
12	Punctual for the class	4.341666667	4.33234127	4.519444444
13	Engages students through out the class	4.1	4.2125	4.486111111
14	Communication and explanation is easy to understand.	4.013888889	4.166468254	4.511111111
15	Comes to the session well-groomed	4.352777778	4.4	4.508333333
16	Overall he/She is a great Faculty.	4.102777778	4.231349206	4.572222222



Interpretation:

STRENGTHS:

1. The faculty needs to use real-life examples to teach the subject in an effective way.
2. The faculty is always punctual to sessions.
3. The faculty appears always professional and well-groomed.

AREAS OF IMPROVEMENT:

1. The faculty needs to consistently provide pre-reading materials before each session
2. The faculty need to use the SCPS approach in the classes to enable application-based learning. (For any queries, faculty may discuss with respective HODs)
3. The faculty needs to align each topic with job descriptions as this will provide a clear career perspective.

PUNE INSTITUTE OF BUSINESS MANAGEMENT

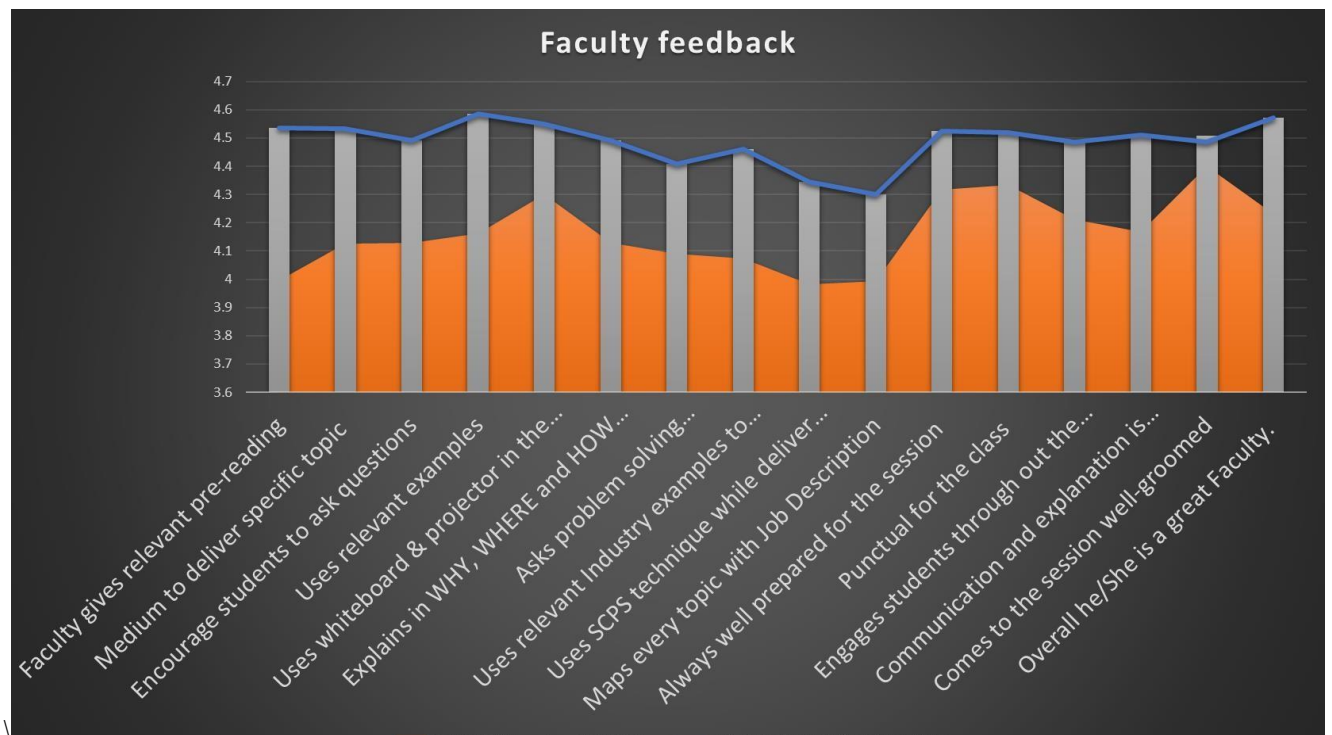
APPROVED BY AICTE, MINISTRY OF HRD, GOVERNMENT OF INDIA
AFFILIATED TO THE UNIVERSITY OF PUNE



Faculty Name: Dr. Kulkarni Sanjeev
Subject: Marketing Management
Semester: First (I)

Course: MBA
Batch: 2022-24

Sr No	Name	Dr. Kulkarni Sanjeev - Marketing Management	Average Point	High Point
1.	Kindly Rate the faculty - Faculty gives relevant pre-reading for every sessions	4.536111111	3.996428571	4.536111111
2.	Kindly Rate the faculty - Faculty uses relevant medium (Video, Audio, PPT, Case Study, etc..) to deliver specific Topic	4.533333333	4.125595238	4.533333333
3.	Kindly Rate the faculty - Faculty encourage every students to ask relevant question in the session	4.491666667	4.129761905	4.491666667
4.	Kindly Rate the faculty - Faculty uses relevant example based on the topic	4.586111111	4.161507937	4.586111111
5.	Kindly Rate the faculty - Faculty used white board G projector at the best possible way	4.55	4.301388889	4.55
6.	Kindly Rate the faculty - Faculty explains in every topic WHY the topic taught? WHERE it can be applied? HOW it is aligned with Purpose?	4.491666667	4.128769841	4.491666667
7.	Kindly Rate the faculty - Faculty ask problem solving question / conduct activity in every session to build logical thinking	4.408333333	4.089484127	4.408333333
8.	Kindly Rate the faculty - Faculty used relevant Industry examples to explain topic	4.461111111	4.074007937	4.461111111
9.	Kindly Rate the faculty - Faculty uses SCPS technique while deliver the concept	4.344444444	3.983531746	4.344444444
10	Kindly Rate the faculty - Faculty mapped every topic with Job Description	4.3	3.993253968	4.3
11	Kindly Rate the faculty - Faculty was well prepared for the session	4.525	4.317857143	4.525
12	Kindly Rate the faculty - He/She is punctual for the class	4.519444444	4.33234127	4.519444444
13	Kindly Rate the faculty - He engages students through out the class	4.486111111	4.2125	4.486111111
14	Kindly Rate the faculty - His communication and explanation is easy to understand.	4.511111111	4.166468254	4.511111111
15	Kindly Rate the faculty - He/She comes to the session well-groomed "]	4.486111111	4.4	4.508333333
16	Kindly Rate the faculty - Overall he/She is a great Faculty.	4.572222222	4.231349206	4.572222222



Interpretation:

STRENGTHS:

1. The faculty uses real-life examples to teach the subject in an effective way
2. The faculty consistently demonstrated thorough preparation for each session
3. The faculty appears always professional and well-groomed.

AREAS OF IMPROVEMENT:

1. The faculty needs to consistently provide pre-reading materials before each session
2. The faculty needs to use the SCPS approach in the classes to enable application-based learning.
(For any queries, faculty may discuss with respective HODs)
3. The faculty needs to align each topic with job descriptions as this will provide a clear career perspective.

PUNE INSTITUTE OF BUSINESS MANAGEMENT

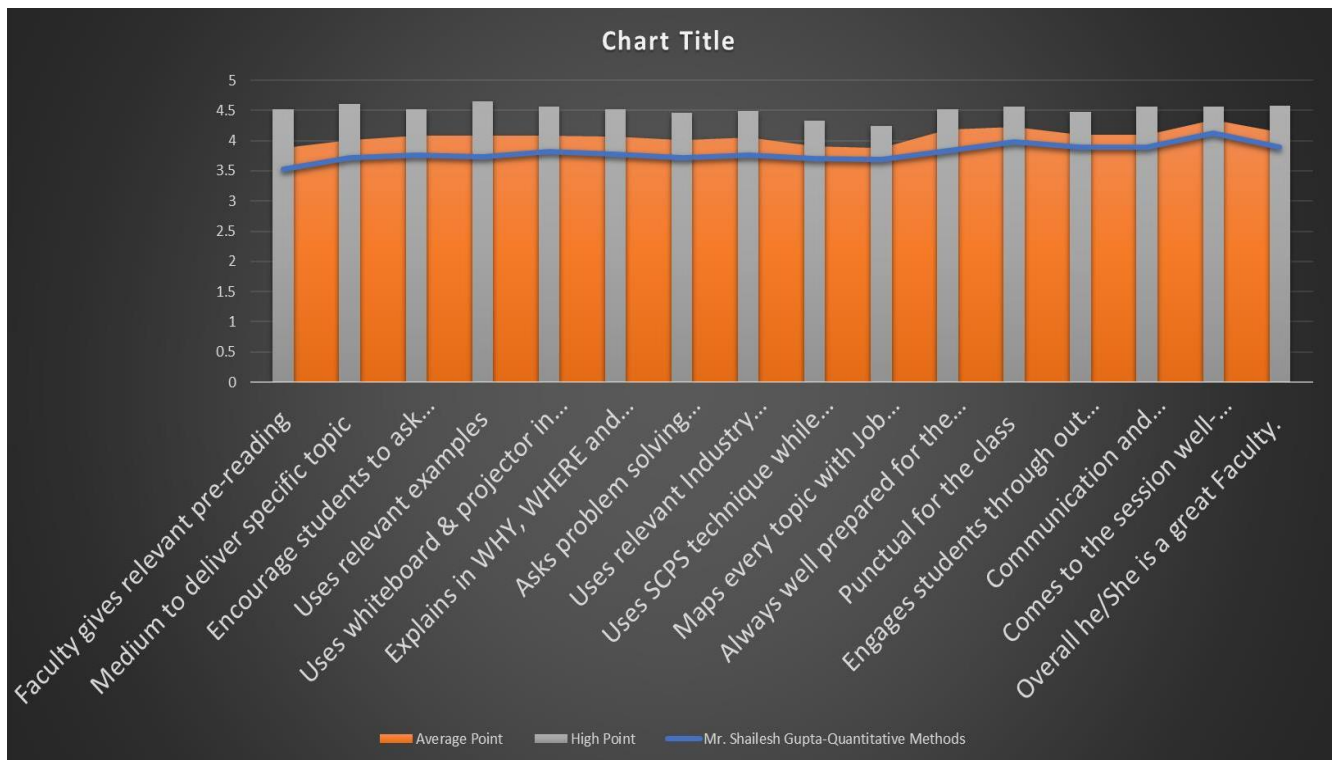
APPROVED BY AICTE, MINISTRY OF HRD, GOVERNMENT OF INDIA
AFFILIATED TO THE UNIVERSITY OF PUNE



Faculty Name: Mr. Shailesh Gupta
Subject: Quantitative Methods
Semester: First (I)

Course: MBA
Batch: 2022-24

Sr No	Name	Mr. Shailesh Gupta- Quantitative Methods	Average Point	High Point
2	Faculty gives relevant pre-reading	3.521186441	3.872632104	4.525423729
3	Medium to deliver specific topic	3.711864407	4.001994018	4.605932203
4	Encourage students to ask questions	3.762711864	4.088235294	4.512711864
5	Uses relevant examples	3.733050847	4.077517448	4.644067797
6	Uses whiteboard & projector in the best way	3.813559322	4.088235294	4.563559322
7	Explains in WHY, WHERE and HOW for every topic	3.775423729	4.067298106	4.516949153
8	Asks problem solving questions/conduct activities	3.724576271	4.003489531	4.457627119
9	Uses relevant Industry examples to explain topic	3.754237288	4.051595214	4.495762712
10	Uses SCPS technique while deliver the concept	3.703389831	3.909022931	4.330508475
11	Maps every topic with Job Description	3.68220339	3.877367896	4.241525424
12	Always well prepared for the session	3.838983051	4.178215354	4.525423729
13	Punctual for the class	3.983050847	4.231555334	4.56779661
14	Engages students through out the class	3.894067797	4.091724826	4.474576271
15	Communication and explanation is easy to understand.	3.898305085	4.100947159	4.563559322
16	Comes to the session well-groomed	4.118644068	4.341974078	4.563559322
17	Overall he/She is a great Faculty.	3.898305085	4.137587238	4.576271186



Interpretation:

STRENGTHS:

1. The faculty appears always professional and well groomed.
2. The faculty's communication is clear and concise.
3. The faculty is always punctual to sessions.

AREAS OF IMPROVEMENT:

1. The faculty need to consistently provided pre-reading materials before each session
2. The faculty need to use SCPS approach in the classes to enable application-based learning. (For any queries, faculty may discuss with respective HODs)
3. The faculty need to make use of diverse teaching mediums, such as videos, audio, PowerPoint presentations, and case studies.

PUNE INSTITUTE OF BUSINESS MANAGEMENT

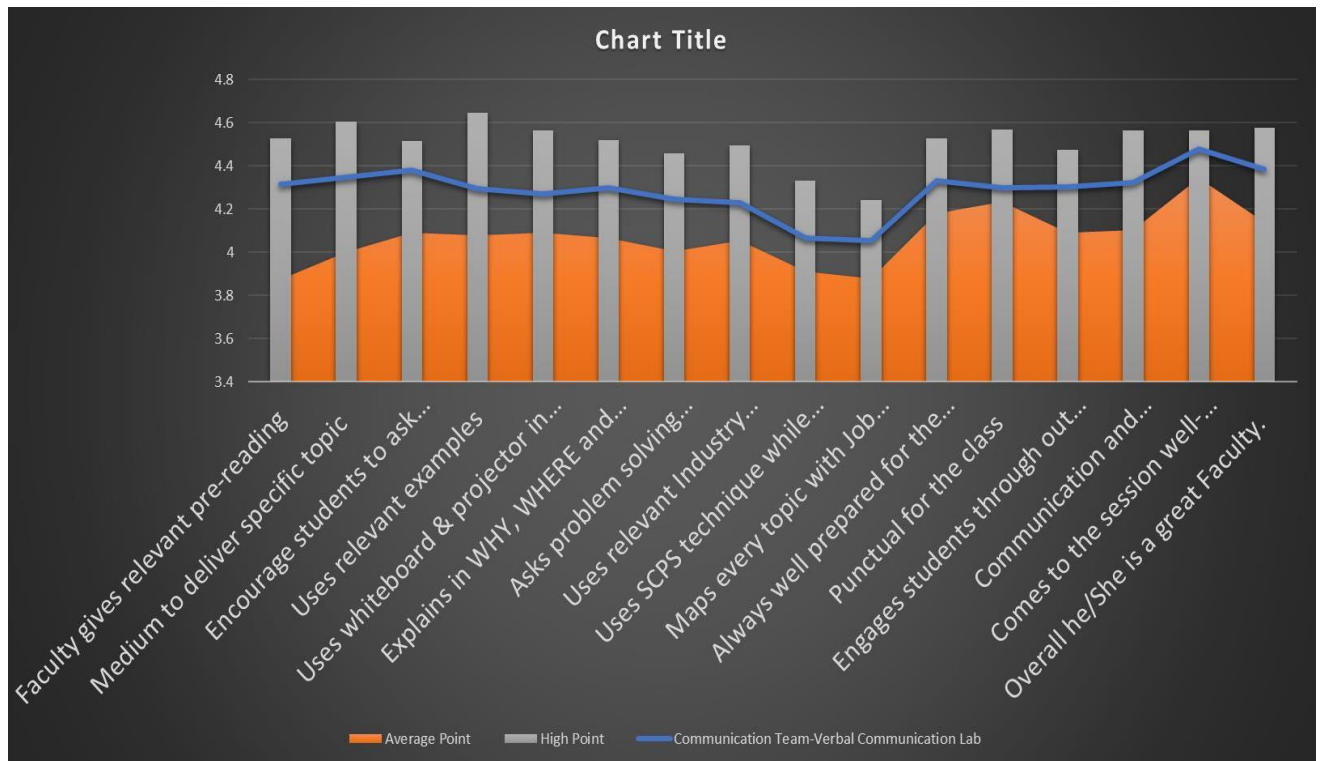
APPROVED BY AICTE, MINISTRY OF HRD, GOVERNMENT OF INDIA
AFFILIATED TO THE UNIVERSITY OF PUNE



Faculty Name: Communication Team
Subject: Verbal Communication Lab
Semester: First (I)

Course: MBA
Batch: 2022-24

Sr No	Name	Communication Team-Verbal Communication Lab	Average Point	High Point
2	Faculty gives relevant pre-reading	4.313559322	3.872632104	4.525423729
3	Medium to deliver specific topic	4.347457627	4.001994018	4.605932203
4	Encourage students to ask questions	4.381355932	4.088235294	4.512711864
5	Uses relevant examples	4.292372881	4.077517448	4.644067797
6	Uses whiteboard & projector in the best way	4.271186441	4.088235294	4.563559322
7	Explains in WHY, WHERE and HOW for every topic	4.296610169	4.067298106	4.516949153
8	Asks problem solving questions/conduct activities	4.245762712	4.003489531	4.457627119
9	Uses relevant Industry examples to explain topic	4.228813559	4.051595214	4.495762712
10	Uses SCPS technique while deliver the concept	4.063559322	3.909022931	4.330508475
11	Maps every topic with Job Description	4.055084746	3.877367896	4.241525424
12	Always well prepared for the session	4.330508475	4.178215354	4.525423729
13	Punctual for the class	4.296610169	4.231555334	4.56779661
14	Engages students through out the class	4.300847458	4.091724826	4.474576271
15	Communication and explanation is easy to understand.	4.322033898	4.100947159	4.563559322
16	Comes to the session well-groomed	4.478813559	4.341974078	4.563559322
17	Overall he/She is a great Faculty.	4.38559322	4.137587238	4.576271186



Interpretation:

STRENGTHS:

1. The faculty appears always professional and well groomed.
2. The faculty make use of diverse teaching mediums, such as videos, audio, PowerPoint presentations, and case studies.
3. The faculty encourages every student to ask questions, fostering active participation and deeper understanding.

AREAS OF IMPROVEMENT:

1. The faculty need to align each topic with job descriptions and as this will provide a clear career perspective.
2. The faculty need to use SCPS approach in the classes to enable application-based learning. (For any queries, faculty may discuss with respective HODs)
3. The faculty need to use industry-specific examples to add value to students' learning.